

**SMALL ADVERTISEMENT CHARGES**

DISPLAYED ANNOUNCEMENTS - 12s. 6d. PER IN.  
 APPOINTMENTS VACANT (24 words) - 8s. 0d.  
 1s. 6d. FOR EVERY ADDITIONAL 7 WORDS  
 QUOTATIONS FOR A SERIES ON APPLICATION

Advertisement or business communications must be addressed to the Manager.

**OFFICIAL ANNOUNCEMENTS**

**CENTRAL MIDWIVES BOARD**

Arrangements are being made for an examination for pupil-midwives to be held as follows:—

FIRST EXAMINATION	
Written part	February 4th
Oral part	February 12th
	February 13th
	February 14th
	Birmingham, Bristol, Leeds, London, Sheffield, Liverpool, Man- chester, Newcastle- on-Tyne.

All applications for entry to this examination must be received by the Board not later than JANUARY 7TH. APPLICATIONS RECEIVED AFTER THIS DATE WILL NOT BE ACCEPTED. 35

**CENTRAL MIDWIVES BOARD FOR SCOTLAND.**

INTIMATION IS HEREBY GIVEN that EXAMINATIONS will be held simultaneously in Edinburgh, Glasgow, Dundee and Aberdeen. (subject to the number of candidates entered therefor).

FIRST EXAMINATION,  
TUESDAY, DECEMBER, 2ND, 1952.

SECOND EXAMINATION,  
TUESDAY, FEBRUARY 3RD, 1953.

LAST DAY FOR ENTRY—ONE MONTH BEFORE DATE OF EXAMINATION.

N.B.—PART I of the Schedule and Fee must be sent to me NOT LATER THAN ONE MONTH BEFORE THE DATE OF THE EXAMINATION.

DAVID THOMSON,  
Secretary.

Surgeon's Hall,  
18, Nicolson Street,  
Edinburgh, 8.

33

**HOSPITAL VACANCIES, ETC.**

**CITY HOSPITAL.**

HUCKNALL ROAD, NOTTINGHAM.  
(833 BEDS.)

Complete Training School for Male and Female Nurses.

Situated two miles from the City, in spacious grounds, with frequent bus service from the gates. STUDENT NURSES required. Applicants must be 18 years of age or over. Preliminary Training Schools commence January, March, June and October.

Training allowance in accordance with Whitley Council Scales.

For further particulars please apply to MATRON. 22

**CITY HOSPITAL.**

HUCKNALL ROAD, NOTTINGHAM.

Required—PUPIL MIDWIVES (RESIDENT).

Six-month course for Part I Midwifery, commencing February 1st, May 1st, August 1st and November 1st each year. Each course has one Study Day per week. Candidates must be S.R.N. Part II training may be taken at the Firs Maternity Hospital, which is an Associated Hospital.

Training Allowance as recommended by the Nurses and Midwives Council.

Further particulars and application forms may be obtained from the MATRON. 1

**WORCESTERSHIRE COUNTY COUNCIL**

APPOINTMENT OF HEALTH VISITOR AND SCHOOL NURSE

Applications are invited from qualified Health Visitors for a vacancy in Stourbridge Borough. Salary and conditions of service in accordance with the Whitley Council Recommendation. Applicants should own, and be able to drive, a car. Travelling expenses and uniform allowance payable in accordance with the County Council's scale. Appointments are superannuable.

Application forms from County Medical Officer, County Buildings, Worcester, to be returned not later than December 12, 1952. 64

**THE BRITISH JOURNAL OF NURSING**

Published Monthly. *Subscribe through the Office*

19 QUEEN'S GATE, LONDON, S.W.7  
Phone: Western 2234

ANNUAL SUBSCRIPTION  
INLAND - 8s. 6d. POST FREE  
OVERSEAS 8s. 6d.

Editorial communications to be addressed to the Editorial Board

The University of Alberta Hospital (950 beds) invites applications from Graduate nurses who are eligible for Registration in Canada, for general staff duty. Gross salary: minimum \$202 and maximum \$230 with \$25 deducted for meals and laundry; 44 hour week; 11 statutory holidays; 3 weeks vacation annually; cumulative sick leave; pension plan and group insurance; Blue Cross.

Apply to SUPERINTENDENT OF NURSING SERVICE, University of Alberta Hospital, Edmonton, Alberta, Canada. 30

**GRANTHAM AND KESTEVEN GENERAL HOSPITAL**

Manthorpe Road, Grantham, Lincs.

Applications are invited from well-educated young women between 18 and 30 years. Three years' STUDENT NURSE training, including 12 weeks' Preliminary Training School.

Modified block system of training, with 48-hour week.

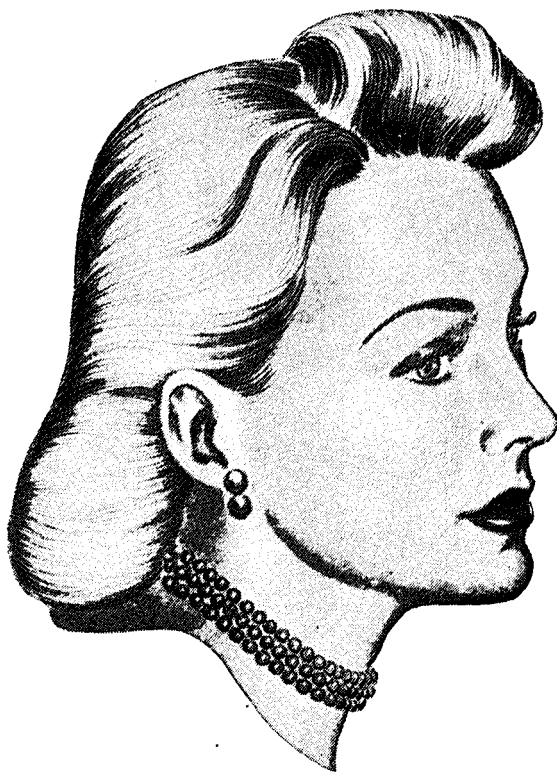
Vacancies January and June, 1953.

Candidates on the Supplementary Register accepted for two years' training. Salary and conditions of service in accordance with the Whitley scale.

Application forms from the MATRON. 57

**FOR SALE**

A UNIQUE OPPORTUNITY to acquire PRIVATE REST HOME near Hove sea front, producing £2,700 p.a. Excellent profits; sound, easily run; genuine reasons for disposal; low price for immediate sale, £7,500, includes freehold, complete contents; well furnished; accountant's figures inspected; strongly recommended.—Apply FAIRBANKS, 117, Queens Road, Brighton. 34



*Do you lead an exacting life?*

No need to suffer dreary 'off-days' if you are wise and *always* ask for Mene or Menex, for complete comfort and security.

Developed from more than 50 years experience, the superb quality of Mene and Menex demonstrates a consistent uniformity in manufacture that unflinchingly provides correct pad absorbency. Supplied with moistureproof back and non-stretch gauze covering, they are available in sizes to meet all requirements. Hygienically bag-packed for cleanness and simplicity of handling. Always ask for Mene or Menex, and be certain.



ROBINSON & SONS LTD., Chesterfield & London